

TOUR LISBON IN A DIFFERENT WAY

Duration: Approximately 3 hours - 14H30 to 17H30

BRIEF EXPLANATION OF THE TOUR

The briefing will be done at the hotel with all participants present.

The teams will then depart the hotel to different locations in Lisbon from where they will start their activity.

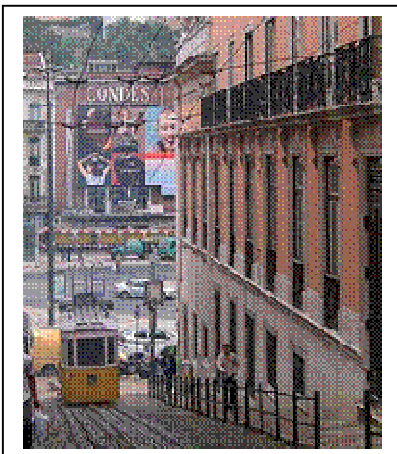
Each team will be composed by a maximum of 20 pax and each is accompanied by an English speaking guide (optional) during the whole circuit.

Buses/minivans will take them to different locations in Lisbon. On each of these locations one or two teams will be left. However, they will start the tour using different itineraries even if departing from the same place. This way they will not be together.

DESCRIPTION OF THE TOUR

After being dropped off in town, they will start this guided tour which will cover the following areas of Lisbon:

Restauradores Square - This large square commemorates the country's liberation from 60 years of Spanish rule in 1640. In the center is a patterned pavement surrounding a 30-meter high obelisk with two bronze figures on the pedestal depicting Victory and Freedom.

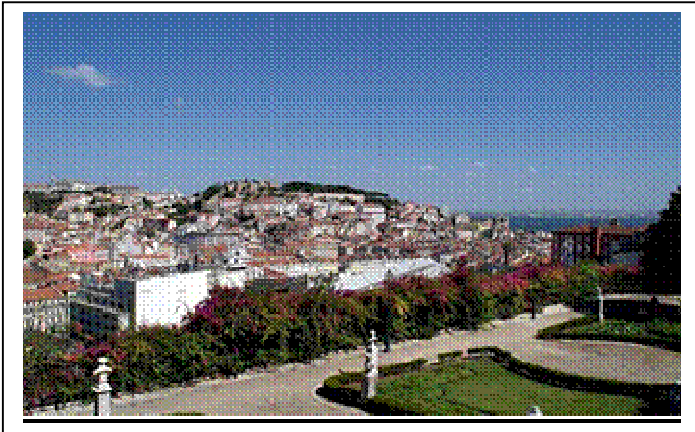


Gloria Funicular - The Glória funicular was opened in 1885 with the pomp and circumstance typical of the time - a host of guests, fireworks, music and much cheering and hooraying.

In February 2002 it was classified as a national monument. It was the second of its kind in Lisbon, thanks to the initiative of the New Lisbon Mechanical Lift Company. This company specialised in the building and running of urban transport on sloping terrain. The first of its lifts was the Lavra, opened the year before.

The carriages were different from anything that Lisbon had ever seen.

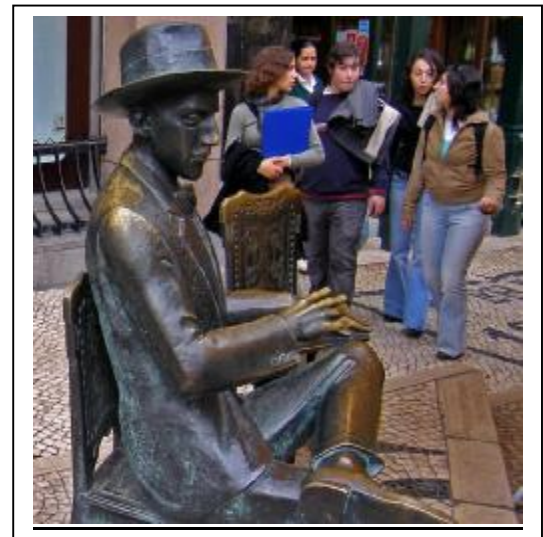
The Gloria Funicular leads to the top of one of the hills of Lisbon. Once you get off, you walk and you cross the street you will see one of Lisbon's best view from the



Miradouro (view point) de S. Pedro de Alcântara

Chiado area and Brasileira Coffee Shop - Oldest, most famous cafe in the city, with wooden booths, mirrored walls and a long oak-paneled bar straight out of the 18th century. Young pre-clubbers coming in to meet elderly locals going out and make for a lively mix of tradition and trend. There are chairs under umbrellas outside to watch the crowds night and day, and that bronze statue of the man in the hat, the famous Portuguese poet from the beginning of the 20th century Fernando Pessoa.

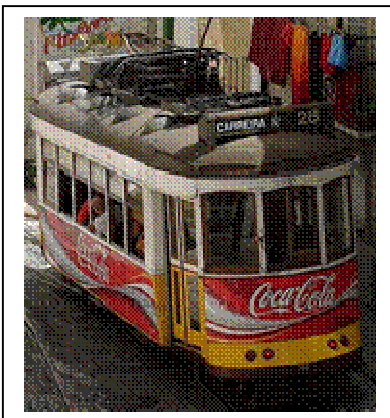
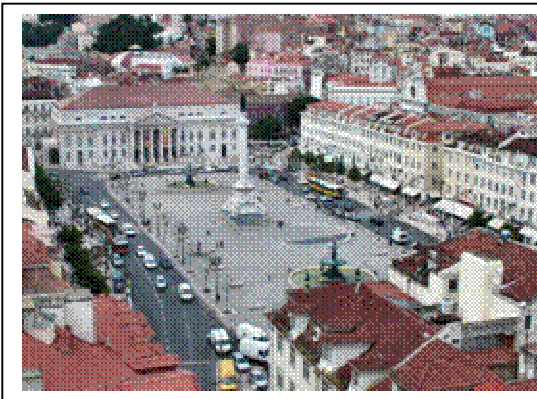
Fernando Pessoa was a man who drank copious amounts of absinthe and spent countless hours sitting in this café with other poets and painters such as Almada Negreiros and Santa Rita Pintor, discussing several themes of the time, from the arts to politics. In his dedication there is a bronze statue of him sitting outside the café.



Downtown Rossio and "Ginjinha" tasting

Rossio Square - The old heart of the city. Rebuilt in 18th century, after the great earthquake of 1755, The Praça Dom Pedro IV is the busiest square of Lisbon. Once used as a cattle market, a public execution center, bullfight arena and carnival ground, today the square serves both for the locals and the tourists with its well-known cafés. At the end of the square is the Queen Maria II National Theater. Across the Theater, behind Rossio is São Domingos Church. When walking in Rossio, the Rossio Train Station will catch your attention with its neo-manueline style beautiful architecture.

Ginjinha do Rossio - This bar, named for the cherry brandy concoction for which it is famous, is a must for visitors to the city. Quaint atmosphere and fun crowd make this bar a popular stop. They serve only "ginjinha". Ginjinha is a liqueur made by fermenting ginja (similar to cherries) in brandy. Ginjinha is served in a shot form with a piece of the fermented fruit on the bottom of the cup.



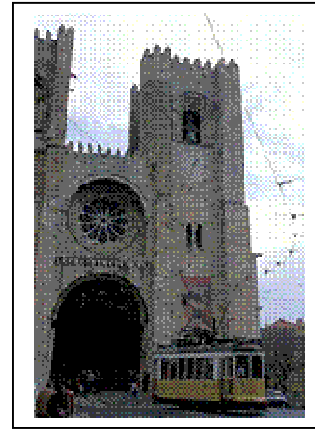
Tram 28 at Rua da Conceição to Sta. Luzia viewing point - The legendary Tram 28 is a tourist attraction in itself. Vintage trams still ply the well worn route from the city centre on sea level, right up through the jumble of streets towards the heights of St. George Castle. On the way the tram slices open the city, providing insights into the Lisbon way of life, as well as offering sweeping views back towards the city and out over the Rio Tejo.



Alfama quarter - Walking through the narrow streets and houses of Alfama is an unforgettable experience. Alfama is of Arab origin and was one of the few areas of Lisbon which resisted the 1755 earthquake. The authenticity of the quarter exceeds the mere antiquity and geometry of the buildings. Today it is still considered the most authentic popular quarter of Lisbon.

Castle of St. George - Perched on the highest of Lisbon's seven hills, above the old Moorish quarter, the *Castle of St. George* was the royal residence until the late 15th century. Originally built by the Visigoths and later named after King Joao I, the castle, along with much of Lisbon, was severely damaged by a devastating earthquake in 1755. The castle was declared a National Monument in 1910, with rebuilding work starting in 1940 to restore the site to its former state of luxury. Today the castle offers spectacular views of Lisbon from the well-preserved ramparts, as well as beautiful gardens full of olive, cork and pine trees, and flamingo, peacock and swans.

The Cathedral - Built in 12th century on the ruins of the Moslem mosque by the order of Portugal's first King D. Afonso Henriques, this Church is designed in a late-Romanesque architectural style with a gothic chapel.



Black Horse Square (or Commerce Square) - In the end of Rua Augusta is Praça do Comércio. The Praça (square) was built in the end of downtown (Baixa), because Marques de Pombal wanted a wide square that stood out in Europe. All the streets in downtown will lead you there.

Here the bronze statue of Dom João I (18th century), the Rua Augusta Arch (19th century) and a symbol of Portugal's imperial power Terreiro do Paço can be observed. The square today serves as the Headquarters of several Portuguese government ministries and also as fairgrounds for concerts and exhibitions.



Belém area (Jerónimos Monastery, Tower of Belém, Monument to the Discoveries and Pastelaria de Belém)

Pastelaria de Belém - The Taste of Tradition At the beginning of the Nineteenth Century, in Belém, next to the Mosteiro dos Jerónimos (the Heironymite Monastery) there was a sugar cane refinery linked to a small general store. As a result of the liberal revolution of 1820, all convents and monasteries in Portugal were shut down in 1834, the clergy and labourers expelled. In an attempt at survival, someone from the monastery offered sweet pastries for sale in the shop; pastries that rapidly became known as 'Pasteis de Belém'. At that period the area of Belém was still far from the city of Lisbon and could be reached by steam-boats. At the same time, the grandeur of the monastery and the Torre de Belém (the Belém Tower) attracted visitors who soon grew used to savouring the delicious pastries originated in the monastery. In 1837, the baking of the 'Pasteis de Belém' was begun in buildings joined to the refinery, following the ancient 'secret recipe' from the monastery. Passed on and known exclusively to the master confectioners who hand-crafted the pastries in the 'secrets room', this recipe remained unchanged to the present day. In fact, the only true 'Pasteis de Belém' contrive, by means of a scrupulous selection of ingredients, to offer even today the flavour of the ancient portuguese confectionary industry.

Jerónimos Monastery - This 16th-century monastery is one of the few surviving examples of medieval, Manueline architecture. Commissioned by Manuel I (after whom the style of architecture is named), work began on the monastery in 1502. The original design was the work of the architect Diogo de Boytac, although other Masters were involved in the actual construction. It is listed (along with the *Torre de Belém*) as a UNESCO World Heritage Site and it is a spectacular building with high arches, impressive columns and ornate spires.

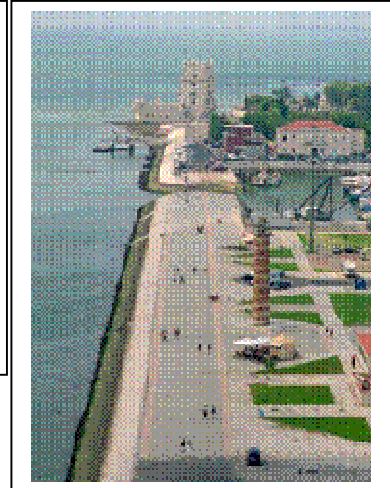
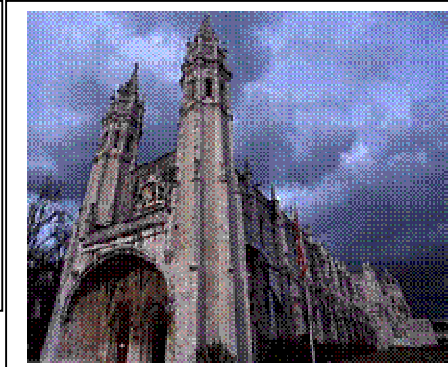
It is also the resting place of Vasco da Gama, who set sail from Bélem in 1497 to discover India, and of Portugal's most famous poet, Luís de Camões, who wrote *Os Lusíadas* (the *Lusiads*). Today, visitors can still see various monastic rooms, including a refectory and chapter house, as well as a church hall.

The Tower of Belém - This elegant Manueline Tower was built between 1515 and 1519 in the middle of the Tagus to defend the river mouth and the Mosteiro dos Jeronimos.

Today it stands at the water's edge on the north bank, the river having altered course during the earthquake in 1755. It is an architectural gem; the Romanesque-Gothic structure is adorned with Loggias like those in Venice and small domes like those in Morocco where the tower's architect, Francisco de Arruda had traveled. Jutting out to command the mainstream is an artillery platform, protected by battlements, each of which is decorated with a shield of the Cross of the Order of Christ.

On the keep terrace, facing the sea is a statue of Our Lady of Safe Homecoming.

The tower is five storeys high ending in a terrace.

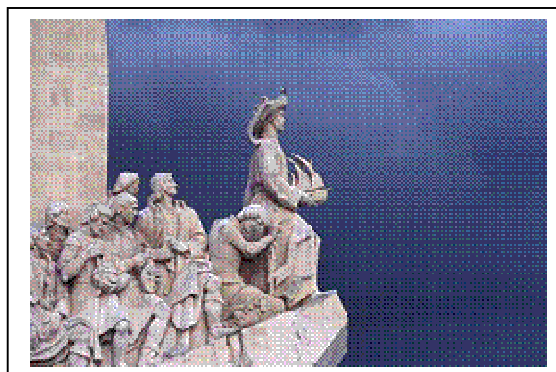


The Monument to the Discoveries - Salazar ordered the construction of this building in 1940 for the Portuguese World Exhibition, but it was only inaugurated in 1960, the year in which the five hundreds years of Infante D. Henrique's death was being commemorated.

The building has the shape of a ship with a statue of the Navigator Prince holding a small ship in his hands on its prow.

On either side of the monument there are statues of some of the most relevant figures from our history - Vasco da Gama, Fernão de Magalhães and Luís de Camões among others.

In front of the building, a windchart and a planisphere where the routes of the Portuguese can be seen is drawn on the ground.



Notes:

1. This will be a walking tour with the use of *Gloria Funicular* to go up and down the hill, the use of the 28 tram to make the circuit between downtown and the castle easier and the use of tram 15 to take them from downtown (Black Horse Square) to Belém area where the different vehicles can be used
2. In Belém area, the different teams will do the defined circuit in different directions, even though they all cover the same monuments and areas: Stopping at *Pastelaria de Belém* to taste a custard cream pastry, passing by *Jerónimos Monastery*, going under the tunnel to the *Tower of Belém* (stop) and along the road to the *Monument of Discoveries* (stop), finalising with a circuit along the river.