



destination UPDATE Ireland

Ireland possesses an abundance of riches. Beautiful landscapes ~ history & culture ~ world class golf ~ vibrant nightlife ~ great shopping ~ a wonderful modern tourism infrastructure... and offers a warm friendly welcome to a safe destination!

Ireland is made up of fact and fantasy, beautiful countryside, quality city and country hotels, superb cuisine, an amazing choice of drink (there is so much more than just Guinness), extremely hospitable people and as for the fantasy – well, you just can't believe all the 'blarney' you hear, as much as you would like to!

British Airways, British Midland and Aer Lingus all serve Dublin from London and there are also excellent services offered by Ryanair and others available from various UK regional airports.

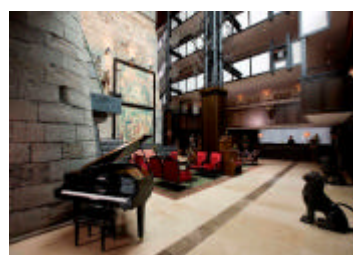
DUBLIN is situated either side of the Liffey River and is a fascinating city, which seems to have an air of expectancy about it. Almost as though it expects you to enjoy yourself and there are certainly plenty of attractions to ensure that you do.

DUBLIN HOTELS

Clontarf Castle, 4-Star close to city centre

In 2006, Clontarf Castle Hotel embarked on a €10 million refurbishment programme and the results are truly spectacular. Dating back to the 12th Century, this 4* deluxe Castle Hotel has something fabulous and unique to offer the most discerning client. Situated just 2 miles from Dublin City Centre in the leafy suburbs of Clontarf and 5 miles from Dublin Airport, it is very much an ideal location for your trip.

Keeping very much in with the tradition of the 12th Century Castle (with a twist of the contemporary), the newly unveiled Hotel will surely be at the forefront of every conference and corporate organiser's mind when choosing their venue in Dublin. With rich fabrics, mood lighting, opulent décor, style and sophistication, the refurbishment is intended to cause quite a stir in both the international market, by providing a sumptuous environment that oozes olde worlde comforts, while attracting visitors with a new grill eatery, trendy bar and quirky bedrooms.



The Morrison – 4-Star City Centre

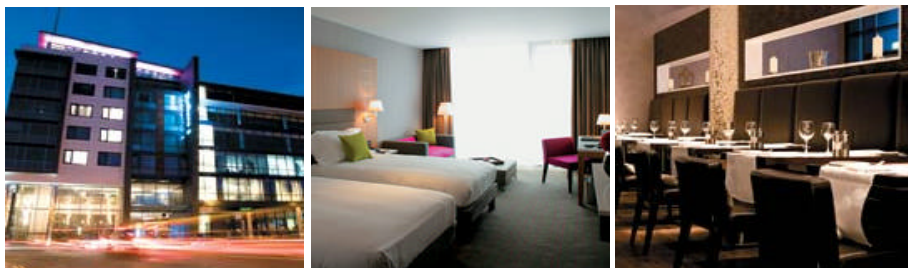
If your client is looking for a really “In” and “Hip” city centre hotel, the Morrison is *the* place to go! The Morrison is probably the coolest and a very luxurious city centre hotel in Dublin. The world famous designer, John Rocha is responsible for the original design of the Morrison, which opened in 1999 with its unique “East Meets West” theme. The inviting interior of this luxury boutique hotel is a mix of high ceilings with pale white walls, original art, stone floors and beautiful grey handcrafted Irish carpets. This stylish Dublin hotel is a haven of calm and designer luxury and is renowned for its great service and easygoing atmosphere.

All bedrooms are stylishly designed and appointed. Frette linen and the softest duvets and pillows ensure a great night’s sleep. All rooms are fully air conditioned and each room offers a CD player, safe and mini bar as well as broadband Internet access. The Cafe Bar is set at the front of the hotel and is flooded with natural light. Select a dish from the light cafe bar menu pre and post-theatre or even to relax and play chess. The Morrison also offers a wide range of Meeting and Conference spaces.



The Radisson SAS Royal Hotel, top 4-Star City Centre Hotel

At the crossroads of Golden Lane and Chancery Lane, in the heart of Dublin, sits the newly-built, elegant and sophisticated 4-star Radisson SAS Royal Hotel. The hotel offers a high standard of service and genuine ‘Yes I Can!’ hospitality. Its location is within walking distance of top city landmarks such as Trinity College, Dublin Castle and the famous Grafton Street; a paradise for all shoppers. Theatres, restaurants and nightclubs are also just a few steps away.



The O’Callaghan Davenport Hotel 4- *Hotel

This elegant traditional style deluxe hotel is ideally located at Merrion Square in the heart of Georgian Dublin.

The hotel lies within walking distance of some of Dublin’s greatest landmarks including the National Art Gallery and Trinity College. The hotel consists of a bar (pictured to the right) with a relaxed atmosphere, the very stylish Lanyon’s restaurant and gym facilities.



The **5* Conrad International** has 191 elegant rooms including 9 suites and is within easy walking distance of the main places of interest in Dublin city. It offers 2 restaurants, its own pub and excellent banqueting and conference facilities. Conferences can be catered for 12 - 370 persons, banquets for 40 - 270 and cocktails for 25 - 450. Flexibility seems to be the key.



The **5* Westbury Hotel** is superbly located right on the main pedestrian thoroughfare and shopping area, Grafton Street. With over 200 rooms and suites plus extensive conference and meeting facilities the Westbury is perfectly placed for both incentive and conference groups alike.



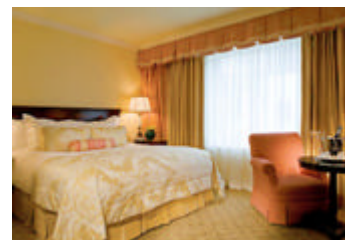
The **4* Burlington Hotel** is centrally located at just a 5 minute walk from the city centre. This is a modern hotel and the tempo is created by its busy restaurants and bars with the mix of the local Dubliners as well as the guests. The Burlington is Ireland's largest hotel with 503 rooms, of which 354 are standards, 145 are concierge rooms and 4 are deluxe suites. It also has Conference facilities from 40 - 1700 delegates.



The **5* Merrion Hotel** is a very pleasant hotel which feels as though it is three different hotels in one, as when you walk around the interior seems to change dramatically. It is a very spacious hotel and the rooms are in Georgian style with 43 Standard rooms, 77 Deluxe rooms and 20 Suites as well as a health spa and swimming pool. The Cellar bar is a famous location at the hotel for celebrities such as Robbie Williams and the Corrs to visit.

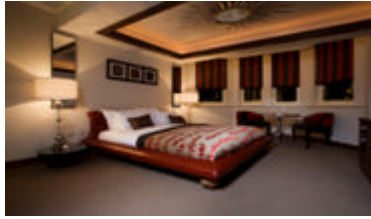


The **5* Shelbourne Hotel** - Built in 1824, the luxury 5 star Shelbourne Hotel has been magnificently restored whilst keeping its historic charm. Located in Dublin city centre overlooking St. Stephen's Green it is ideally situated close to Dublin's cultural and historic buildings. The hotel offers spacious accommodation; its 190 bedrooms and 22 Suites are equipped with all the mod-cons, including laptop-sized safe. Pictured to the left is an example of a Deluxe Guest Room. Facilities are excellent and the hotel is very traditional and full of 'Olde' world charm. It provides complete banqueting facilities with 13 meeting rooms; the largest of these being the Great Room (pictured to the right), which can host up to 450 delegates. As well as a Health and Relaxation centre the Shelbourne also boasts several of Dublin's best bars and restaurants. Enjoy a cocktail or Ireland's own Guinness at the renowned Horseshoe Bar, visit the Oyster Bar or try a prime-cut steak at The Saddle Room Restaurant.

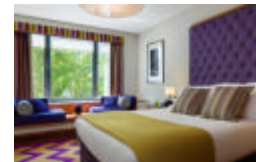


The 5* Dylan Hotel –

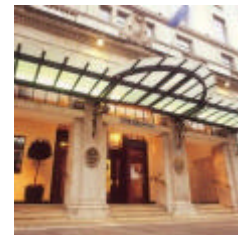
The Dylan is a 5* boutique hotel, which is located in a leafy, affluent area of the city centre. The hotel possesses 44 bespoke bedrooms (Experience Suite pictured to the left) and was listed as one of the 65 hottest new hotels in the world in the 'Conde Nast Hot List'. In addition the hotel was voted **Best New hotel 2007 and Best Boutique Hotel 2008** by Hospitality Ireland. The hotel has meeting spaces for up to 12 people with state-of-the-art audio, visual and telecommunications capabilities, complimentary wireless internet access in either the 1900 Room (pictured to the right) or the elegant Library. There is also an Urban Oasis available on the outdoor terrace, which comes with a dedicated staff member.



The **5* Fitzwilliam**, is a recently constructed luxurious hotel designed by Conrad Design Partnership. It has 130 bedrooms, 2 suites and meeting & conference facilities for 16 - 100 delegates. The décor around the hotel is chic and elegant with a very pleasant atmosphere and helpful staff.



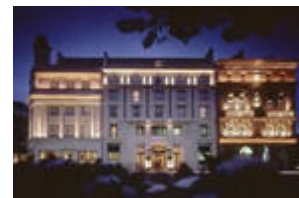
The **4* Star Gresham Hotel** is situated in an enviable location putting you in easy reach of Dublin's finest attractions. It is 15 minutes away from Dublin Airport and is a very traditional hotel with 300 Deluxe bedrooms and 6 Penthouse Suites. The hotel has 23 conference rooms with a maximum capacity of 350 and a minimum capacity of 35.



The **5* Four Seasons Hotel** is a 259 room property, including 67 suites and is situated at a 10 minute drive from the city centre. The hotel is everything you would expect from a Four Seasons property, including the price.



The **5* Westin Hotel**: This 163 room property was built behind the façade of the Former Allied Irish bank building built in 1863. It is ideally situated right in the centre of the city opposite Trinity College and is in walking distance of Grafton Street and other major areas of interest in the city. The Westin has eight flexible meeting rooms, all featuring natural daylight and offering the latest audio-visual equipment. The original 19th-century Banking Hall has been timelessly restored and seats over 200 people.



DUBLIN BARS

It is at night that Dublin comes into its own with so many pubs, clubs and even more pubs. Some like the **Abbey Tavern** and **Johnnie Fox's** offer excellent local fayre with a real sing-a-long Irish party feel.

Whether you are looking for a pub for music or just to sit and chat, you are spoilt for choice in Dublin, so much so that it is difficult to know where to start. In my usual unselfish way I forced myself to check out some of the most suitable pubs on your behalf; a rotten job but someone had to do it!

Licensing hours are a bit hit and miss. Roughly speaking from Sunday to Thursday the pubs are open until 11pm and on Fridays some pubs are open an extra hour (late bar extension) while on Saturdays it is generally 12pm or even 1am. As all but the most touristy pubs seem to ignore the rules completely I suppose timings are irrelevant, but a useful guideline all the same.

The two main areas for pubs are Temple Bar and Baggot Street.

You would run a mile if you came upon a London pub with the external, and often the internal looks of the average Irish pub. It is however the people, not the surroundings, that make the Irish pub so unique and make it one of the last bastions of the long lost art of talking and enjoying both traditional or pop music together.

For those who want music with their drink try the following:-

IN THE TEMPLE BAR AREA

The Quay. A great pub on two floors with plenty of atmosphere and on the second floor it has nightly Dublin / American folk music from 21.00. It also gets very busy, so it is normally best to get there early if you want a seat.

Oliver St. John Gogarty Another two floor pub with music every night on the second floor. This time the music is more traditional with the musicians receiving only donations from the audience to ensure that it remains a Mecca for Irish Folk music lovers.

Fitzsimons Bar A more modern establishment offering a halfway house between mainstream traditional music and the more commercial Irish music. As well as music they also feature Irish Step dancing on a nightly basis and during afternoons and evenings throughout weekends.

BAGGOT STREET AREA

The Baggot Street area is slightly less wild and commercialised than Temple Bar with its pubs, with the exception of O'Donoghue's, which is frequented more by Dubliners than tourists.

O'Donoghues is one of the legendary drinking and musical establishments of Dublin.

Foley's is a pub with a more simple approach to music with a guitar/banjo duo to entertain you with traditional music. Next door is:

Reily's bar, which is smaller and more atmospheric than Foley's with a small band of regulars who make it a cosy place to enjoy the music.

OTHER PUBS NEAR TO TEMPLE BAR THAT FEATURE MUSIC

The Porterhouse - Parliament Street. A Micro Brewery in its own right brewing a wide range of ales from its own Porter to Lager. Beautifully furnished throughout in traditional brass and dark wood and featuring music most nights with late bar music at the weekend.

Brazen Head - Lower Bridge St. The oldest pub in Dublin circa 1198. It also has a huge and inexpensive lunchtime carvery; not exactly hôte cuisine, but it certainly sticks to your ribs on a cold winter's day.

Mother Redcaps - Christchurch Place. This is recommended for its music by some 'in the know' locals and is certainly worth a try.

PUBS WITHOUT MUSIC - BAGGOT STREET AREA

Toners is very much the 'in place' for the younger set to socialise.

The Baggots Inn (formerly Jack Charlton's Pub), so don't be surprised if the television is tuned into a match when you visit.

Doheny & Nesbitt - another pub to add to your Baggot Street pub crawl; this one is frequented by lawyers and television / radio personalities.

TO COMPLETE YOUR PUB CRAWL THE FOLLOWING ARE WORTH A VISIT:

International Bar - Wicklow Street - a great place to chat and people watch.

Kehoes - South Anne Street's ramshackle splendour with great character.

Long Hall - Great George Street; one of the best bars in which to meet and chat.

Mulligan's - Poolbeg Street; although one of the more laid back pubs around, it is renowned for pulling the best pint of Guinness in Dublin.

Ron Black's Dawson Lounge - Dawson Street - reputed to be the smallest pub in Dublin.

Café en Seine - Dawson Street. This is not really a pub as such, but has a great atmosphere with its cavernous setting, offering something a little different. The venue caters for up to 1,500 guests at a time with a full bar service. The décor is art-nouveau in the style of a French Parisian coffee house and includes many fine sculptures, furniture and decorations. There are three floors and the first floor has a balcony which overlooks the front and back sections of the bar including the 4 story high glass roofed atrium at the rear of the building.

The Ha'penny Bridge Inn is on the south bank of the Liffey on Wellington Quay and is one of the last surviving pubs in Temple Bar that has not changed radically over the last few years. It used to be an early meeting place for Thin Lizzy (there's a picture of Phil Lynott somewhere on the walls). The pub is named after the Ha'penny Bridge across the Liffey in Dublin, so named for the toll that pedestrians were formerly charged to cross it.

Rashers Garaghty - Named after Ruairi Garaghty whose famed thirst came from his love of salty bacon. This is a modern themed pub with a difference, set in a basement in Grafton Street, which offers good lunchtime snack meals. In the evening it is a very noisy disco type venue.

One thing you cannot escape from is the drink - famous for Guinness, Caffreys and other such ales, it would be a great shame not to remember and sample Ireland's Whiskey. (Note: in Ireland it is spelt with an 'e' WHISKEY). With over 15 brands of Whiskey it is great fun to visit the **Old Jameson Distillery** - the original distillery in Dublin, which has been converted into one of Dublin's major attractions. This includes a video showing how Whiskey was produced, the history of its production and a tour of the distillery talking you through the stages of how whiskey is made. After your tour, why not sample a glass of Jameson's Whiskey and if you wish you can arrange whiskey tasting for your group.

One particular and legendary establishment to rival Harry Ramsden's in Guisley (or more appropriately Betty's Tea-rooms in Harrogate) is **Bewley's Cafe** in Grafton Street. The Café offers tea, coffee and cream cakes to the masses morning, noon and night. There are two other branches in Dublin, but the Grafton Street branch with its dark wood, stained glass windows and waitresses dressed in outfits from a bygone era is a must.

HUNGRY?

If you have a lunch or dinner at leisure and you're in Temple Bar you could try **The Elephant & Castle**. Don't miss some of the best spicy chicken wings to be had anywhere and watch the size of the portions, as one basket and fries is enough for most appetites. Another interesting restaurant right next door is **Gallagher's**, where traditional Irish dishes, such as potato boxties are served in an 'olde worlde' atmosphere, complete with an open fire during the winter. If you want the traditional Irish atmosphere, good seafood and live background music try Pier 32 - an ideal setting for any group.

Polly Hops - A traditional Irish pub & restaurant. Polly Hops is one of Dublin's oldest drinking establishments, located 20 minutes from the city centre and surrounded by rolling countryside in the tiny setting of Milltown. Polly Hops mainly specialises in seafood, but is also popular for delicious steaks, hearty stews and mouth watering poultry dishes. Large groups can be accommodated in their dining hall; Irish dancing and live bands can be arranged. The venue has a very lively atmosphere and by the end of the night most people will be up dancing.

The Unicorn Restaurant is a petite venue, located just off Baggot Street. The food is of upmarket Italian style with such items as deep fried risotto on rocket salad, tagliatelle with salmon, or *calamari* on the menu. The Unicorn brand also incorporates Unicorn Number 5 - an intimate and exclusive area with Piano Bar, for private dinners and parties, Unicorn Food Emporium (a deli/ takeaway) and Unicorn Café.

BANQUETING

For larger groups **the Royal Dublin Society** or **The Point** (Dublin's leading concert venue, allowing options for banqueting, conferences and themed parties for up to 1500 persons) would be suitable. For that special evening there is no better venue than **Number 10**. This elegant Georgian house overlooking the River Liffey opposite the Morrison Hotel (owned by Bono and U2) has been restored to the highest standard and is in keeping with its long and distinguished history. It has been used by pretty much every celebrity that has visited Dublin in recent years, from politicians such as Bill Clinton, to the leading actors and musicians of today. This venue would be an excellent choice for an exclusive, candlelit dinner for up to 40 guests or a cocktail reception for up to 120 guests.



Also used for banquets is Royal Hospital of Kilmainham. The hospital dates back to the 1680's as a hospice for retired soldiers with the land on one side being used as a consecrated graveyard. Today it is used as a museum for Modern Art and offers Conference & Banqueting facilities. It has several different rooms which can be used for delegates and others include the Baroque Chapel which was once the chapel of the hospital and is now no longer in use as well as The Cellars, Great Hall and Francis Johnston Suite. Rooms can accommodate between 20 - 700 persons.

CONFERENCE VENUES

Croke Park Conference Centre – This is a unique conference venue located in central Dublin, on the airport route and which is one of Europe's Largest Stadium Event Centres. The centre is an ideal location for Conferences, Exhibitions, Product Launches and Press Conferences etc. There are 87 meeting rooms and eight conference suites, all with natural daylight and the suites have large foyer and reception areas with fantastic views over the pitch and stadium.



The Dublin Convention Centre - www.theccd.ie – opening September 2010! This venue will cater for up to 4000 delegates!

TO TAKE HOME

Every Saturday morning at the **Temple Bar Market**, suppliers of fresh local produce come from all areas around Dublin to trade. Such culinary delights as cheese, smoked mussels, smoked pork and much, much more can be found at this small, rather hidden away marketplace.

Some themed party ideas - Medieval Banquets, Gangsters & Molls Party and a Market Street Party, where each stall offers different dishes while street musicians entertain you. Many more ideas are available from our DMC, **Wallace Travel Group**.

Apart from Golf (and all around Dublin there are many excellent golf courses), another Irish passion is the Horse Race. With courses such as Naas close to Dublin, a great day out can be organised and customised to your group and unlike Corporate Hospitality at the major UK race courses, it does not have to be expensive. Although these are not prime golf courses, the fun and atmosphere of an Irish Race Day more than compensates.

OUT OF THE CITY

A lot of Dublin can be covered by foot, so for sightseeing it is just as easy to go outside of Dublin, as so much is within easy reach. 1/2 day visits to Malahide Castle, North Dublin, Boyne Valley and Knowth etc. are ideal, as is a visit to Coolnakilly Farm to enjoy a fun-filled 'farm Olympics'.



The County of Wicklow is located just 16 miles south of Dublin and is known as The Garden of Ireland. The area is famed for its many beautiful formal gardens including Avondale, Powerscourt and Mount Usher, and for its stunning and epic landscape. Popular films such as Brave Heart and Excalibur were filmed in the area, which is also home to Ireland's famous Ardmore Film Studios. The County of Wicklow is frequented by hikers and there are many beautiful trails of various degrees through the mountains. Wicklow is also home to Glendalough, where the ancient monastic settlement was founded by St. Kevin and is open to visitors year round.

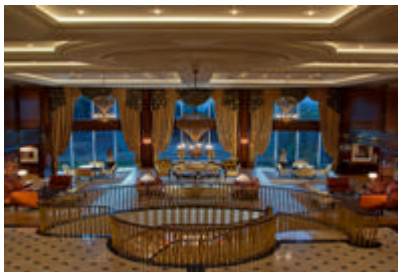


For something more formal Malahide Castle (just a few miles out of the city) can be used exclusively for Banquets. The Castle is set on 250 acres of parkland in the pretty seaside town of Malahide and was both a fortress and a private home for nearly eight hundred years. The Great Hall (pictured to the left) is reputed to be one of the most important medieval rooms in Ireland dating from 1475. Banquets commence with a tour of the castle followed by a banquet during which musicians will provide entertainment. There is a maximum capacity for 75 persons.

Powerscourt House & Gardens - Powerscourt is situated near to the Wicklow Mountains and 20km from Dublin city centre. It is a beautiful heritage property and one of Ireland's most famous House & Gardens. The property can be used for corporate events, including Gala Dinners, Product Launches, Receptions and Conferences. The Ballroom holds up to 350 guests for a reception and up to 200 for a conference while the Garden Rooms can hold up to 250 guests for a reception and up to 100 for a conference.



The **5* Ritz Carlton Powerscourt** is a beautiful Palladian estate situated within 1,000 acres of beautiful gardens and woodland, perfect for various outdoor events and team building activities. The contrast of its stunning and natural surroundings versus the tranquillity of country living makes it a perfect setting.



The Ritz-Carlton Powerscourt can host many events and functions; from exclusive board meetings, to product launches and corporate-wide celebrations. There is more than 10,000 square feet of meeting space available, which includes a 5,959 square feet



Ballroom with private entrance to all meeting and conference facilities and seating for up to 400 people for a gala dinner and up to 600 for a reception. The Ballroom can be further divided into three salons and a specially designed cargo bay allows access to The Ballroom. A dedicated boardroom (pictured to the right) and five further meeting rooms are also available, catering for groups from 18 to 150 people. High-speed wireless internet access, business centre, dedicated technology butler services and state-of-the-art audio visual equipment.

200 spacious guest rooms are available, including 107 suites, 23 club level rooms and 17 club level suites, with panoramic views and terraces available in many rooms. In addition the hotel also boasts a fantastic spa with 20 treatment rooms and 2 private spa suites, a 36-hole golf course, Business Centre and 3 exceptional dining facilities, including Gordon Ramsay's Restaurant at Powerscourt.

Mount Juliet Country Estate - If you want somewhere away from the city try the Mount Juliet Country Estate in County Kilkenn, which is approximately two hours from Dublin Airport.

Mount Juliet is an elegant Georgian House set in 1500 acres of lush Irish pastures and woodlands. The 5* accommodation is made up of 32 rooms (24 Doubles/Twins, 6 singles and 2 suites) in Mount Juliet House and 13 Doubles/Twins in Hunters Yard plus 8 two bedroom Lodges.



Mount Juliet House is one of the best examples of Georgian architecture in Ireland and the main reception areas include hand carved Italian marble Adams fireplaces and intricate stucco work which decorate the walls and ceilings. In addition two bars, a restaurant and 2 conference rooms complete the house.

Hunters Yard, some 200 yards from the main house, offers a contrast with a more relaxed & rustic décor, featuring wooden ceilings, massive old beams and rough stone walls. It also has 2 bars and a restaurant plus a stylish leisure centre and Spa including swimming pool, sauna, steam room, gymnasium and beauty salon.

Rose Garden Lodges are 150 yards from the main house and comprise of spacious suites with balconies or patios, open fireplaces, dining room and kitchen.

In the main house there are 3 rooms for banqueting and conferences etc. catering for 12 - 80 persons for conferences and 15 - 150 for banquets and cocktails etc. In Hunters Yard there are a further 2 rooms with facilities for 20 - 80 persons for conferences and 60 - 150 for banquets and cocktails etc. In fact, both the main house and Hunters Yard could be used exclusively for small groups, as they are totally self contained.

Mount Juliet is also an activity centre with its own Equestrian Centre offering basic tuition, trail riding, cross country courses and for the brave, show jumping. A Clay Target and Archery Centre provides a challenge to marksmen and would-be Robin Hoods and for those who are less energetic, Salmon and Trout Fishing is available beside two rivers that run through the estate.

Golf is a major part of this estate, which has its own Jack Nicklaus designed 18-hole international golf course and a David Leadbetter Golf Academy and the course is regularly used for the Irish Open Tournament.

RESTAURANT IN MALAHIDE

Cruzzo – Cruzzo (pictured to the right) is a bar and restaurant with seating for up to 260, situated in Malahide Marina and surrounded by yachts. It is primarily a seafood restaurant, but also caters to a variety of different tastes. The interior is spacious and comfortable and the views over the water help to create a relaxed yet vibrant atmosphere. The entrance to the restaurant is at the lower level, which also features a Cocktail Bar with grand piano and live entertainment takes place every weekend evening. The upper level is reserved for dining and the kitchens. Cruzzo can host a variety of different events from charity fundraisers and fashion shows to themed evenings and weddings.



COUNTY KERRY

The **5* Sheen Falls** is a very traditional lodge set in the Kenmare Mountains, just 28 miles from Kerry Airport, with regular flights to & from Dublin daily and only 60 miles from Cork International Airport. The lodge is surrounded by beautiful scenery and the cascading Sheen River. It is a timeless and peaceful venue, ideal for relaxing recreational activities such as golf, horse riding, Clay pigeon shooting or fishing for Salmon along its 15 miles of private riverbank. Team events can also be arranged that are both challenging and enjoyable. Sheen Falls has 60 spacious Bedrooms, a Conference Centre seating for up to 120 theatre style and a very good selection of presentation facilities.



The **5* Killarney Park Hotel** is family owned and of Victorian Style, with 65 deluxe rooms and 11 suites. It is located adjacent to the centre of Killarney Town. Bedrooms are very spacious with soft furnishings and antiques and there is Health Spa with Swimming Pool, Sauna, Jacuzzi, Bubble Pools, Canadian Hot Tub and fitness suite. The hotel has its own meeting facilities with 4 different rooms and the largest can accommodate up to 150 people theatre style.



The **5* Hotel Europe** was my favourite hotel in the Killarney area. The scenery is breathtaking; you feel as though you are in the Swiss Alps with the hotel being situated so close to the Mountains. The hotel has a unique character and is mostly made of wood, which adds to the alpine atmosphere and gives it a nice spacious feel. It offers 205 rooms; a Presidential Suite & two penthouse suites and most of the rooms overlook the spectacular lake. It is also a golfers paradise with three Golf courses adjacent to the hotel; other facilities include a Health Centre and conference & meeting facilities offering a 450-seat auditorium, meeting rooms for up to 250 and several syndicate rooms. Not far from the Hotel Europe they also have a sister hotel - the Dunloe Castle (105 rooms), which caters for the Incentive and Conference Markets and staff are able to arrange teambuilding days, featuring Shot Hurley, Roll the Barrel, Horseshoe throwing and Yard of Ale contests.



COUNTY LIMERICK

ADARE MANOR (Five Stars)

Located 20 miles from Shannon Airport this manor house has a very baronial, stately feel about it. The décor is very bold with different colours in many of the rooms, ranging from pink and red to a traditional warm feeling in others. Adare Manor is surrounded by beautiful scenery and has its own Golf Course and many activities can be arranged on site. It consists of 63 rooms, 13 of which are Suites, 14 deluxe, 16 standards and a health centre. Meeting facilities are also available for up to 250 theatre style.



HUNT MUSEUM

The museum is based around a family called the Hunts who collected antiques for their shop in the 1930's and was opened to enable the public to view all the beautiful artefacts from their many years of collecting. It would be ideal to combine a quick tour around the museum with a cocktail party and then dinner.

COUNTY CLARE

DROMOLAND CASTLE (Five Stars)

This is one of the few hotels in Ireland tracing its history back to the period of Gaelic Royal families and the décor is very traditional and highly exclusive. It has over 360 acres of wooded parkland on the scenic estate. Conference facilities are fully equipped with audio/ visual amenities and can accommodate from 80 - 450 delegates. There are 28 standard rooms, 26 Deluxe, 24 Club Deluxe, 5 suites and the remaining rooms are state rooms. Each room has its own personality, blending period decoration with today's modern amenities. Golf is another feature of the hotel with its own golf course and the Clubhouse is now the Health Centre for the castle. There are many activities available including, fishing, horseback riding, archery, clay pigeon shooting and mountain biking.



BUNRATTY CASTLE

The Castle's Park is best used for incentive groups on an exclusive basis and the entertainment can be personalised for a minimum of 120/150 persons up to about 400. The venue can be customised with actors, roving minstrels, musicians, street entertainers, children's choirs, 'pickpockets' and even a shepherd herding a flock of sheep right through your Festivities!.... The possibilities are endless.



BUNRATTY CASTLE BANQUET

The Castle is one of the best known venues in Ireland for the incentive and conference markets, with its twice nightly performances. Like most Medieval Banquets, food such as soup, pork ribs, roast dinners, desert and unlimited wine are served. A very well put together evening made even better by a stop for a drink at Durty Nelly's pub next door.



AVOCA, (aka) BALLYKISSANGEL

The village of Avoca (or as it is better known to everyone – Ballykissangel), in addition to all the places made famous in the television series, such as Fitzgerald's bar, has one of the oldest and finest Woollen Mills in Ireland. Set in beautiful countryside beside the riverbank, Avoca is well worth a visit.



COUNTY MAYO ASHFORD CASTLE

Flights from the UK into Knock or Shannon airport:

For over 700 years, Ashford Castle and its 350 acre private estate have offered a myriad of ways to enjoy the hospitality of a castle in Ireland. From the imposing exterior, one enters a richly decorated interior that speaks of centuries of care and love of fine craftsmanship.



Enjoy the award-winning gourmet in the Connaught Room and George V Restaurants, leisurely afternoon tea in the Drawing Room or pre-dinner drinks in the Prince of Wales Cocktail Lounge.

The accommodation at Ashford Castle is unique in the spaciousness of the rooms, the elegance of the furnishings and the comforts of gracious living. While vacationing on the estate, the choice of activities will fill many a happy day. Take the challenge of the castle's 9-hole private course, the Ashford Equestrian Centre or fishing in the great lake and rivers on the estate

FURTHER INFORMATION

Wallace Travel highly recommends the following activities during your trip to Ireland:

Visit to: the Guinness Storehouse, St. Patrick's Cathedral, Trinity College (The Book of Kells), the Old Jameson Distillery, the National Gallery, Food Markets, Temple Bar, Grafton Street & Temple Bar.

By Train: Go to Bray or Dalkey by a train called DART (easy access ca. 40 min.) – there are lovely seaside villages & Dalkey is home to many celebs like Bono & Enya).

Tours: Dublin Literary Pub Crawl, which starts at the Duke, Viking Splash Tour, Sea Safari, Musical Pub Crawl, Boyne Valley, Rock'n'Stroll Tours and many more.

Teambuilding: Irish Cookery School, Tank Driving, Off Road Driving, spend a night on a lonely island, Sheep herding, Irish Olympics, Murder Mysteries, Who killed Molly Malone Treasure Hunt and many more.

IN CONCLUSION... From the above information it is evident that Dublin succeeds as a Conference and Incentive destination, especially with its fantastic mix of countryside charm versus its city chic and with the upcoming addition of a new Airport Terminal, Dublin will be even more accessible than before.